

Relearn Missed Practice Set Question

PRINT & PLACE ON YOUR DESK AFTER SUBMITTING EACH PRACTICE SET

Skipping these steps will create gaps that make math harder and slower!!!

1. After submitting the Practice Set, the Results page is displayed. (How to Find Results Page)
2. Start a new page in your notebook called "Corrections: Lesson ___".
3. Find all the questions that show less than 1 point:

Question 15
Correct
0.50 points out of 1.00
Flag

Help: PDF Ex. 8.5, Video Ex 8.5

Instructions: Type answer as an integer (no decimals, no spaces between characters). For example: -5, -33, 12, or 101

15. Evaluate $\frac{y}{x}$ when $x = 10$ and $y = 50$.

4. List them at the top of your "Corrections" page, like this:

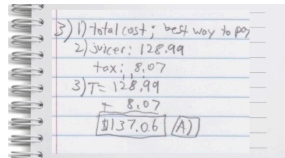


5. Select the link titled "Video Solutions" and fast-forward to the first question listed at the top of your "Corrections" page.

Results Page

Started on	Sunday, March 5, 2023, 8:51 PM
State	Finished
Completed on	Sunday, March 5, 2023, 8:52 PM
Time taken	26 secs
Points	0.50/1.00
Grade	0.00 out of 100.00
Feedback	PDF Solution Video Solutions

6. After watching the solution, pause the video and solve the problem on your "Corrections" page. If you can't or still don't understand, go to step 7.



7. If you still don't understand*, see the "[Ask Dr. Shormann a Question](#)" link on the Course Home page or at diveintomath.com/ask
8. Repeat steps 4-6 for each question listed at the top of your Corrections page.

*If you don't understand after watching the video solution, you have a gap that makes learning math harder and slower. Please see: [How to Quickly Fill Gaps](#)

If you are on Lesson 10 or higher and have not been following the steps on this page for previous Practice Sets, you have developed gaps. Please see: [How to Quickly Fill Gaps](#)